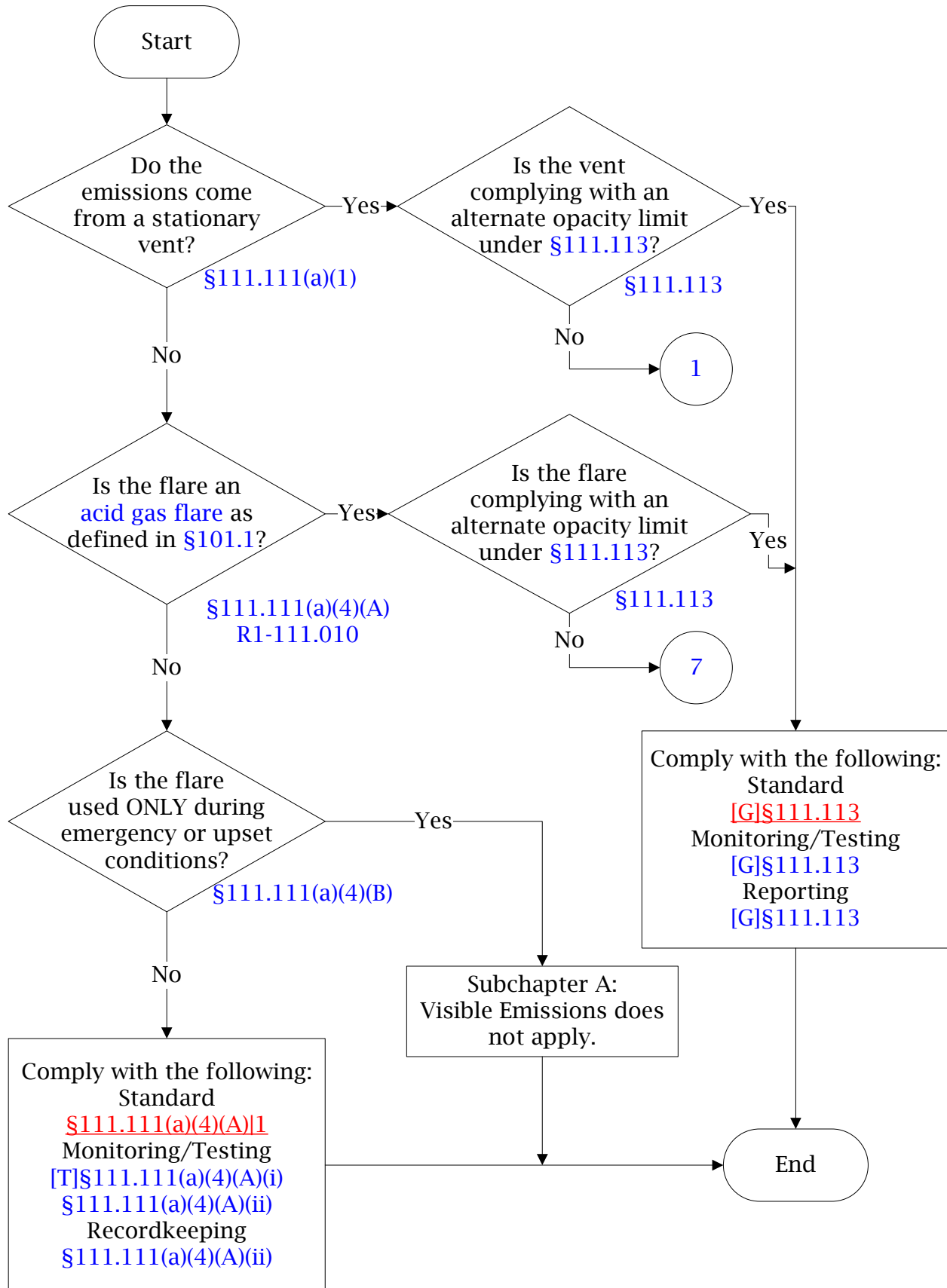


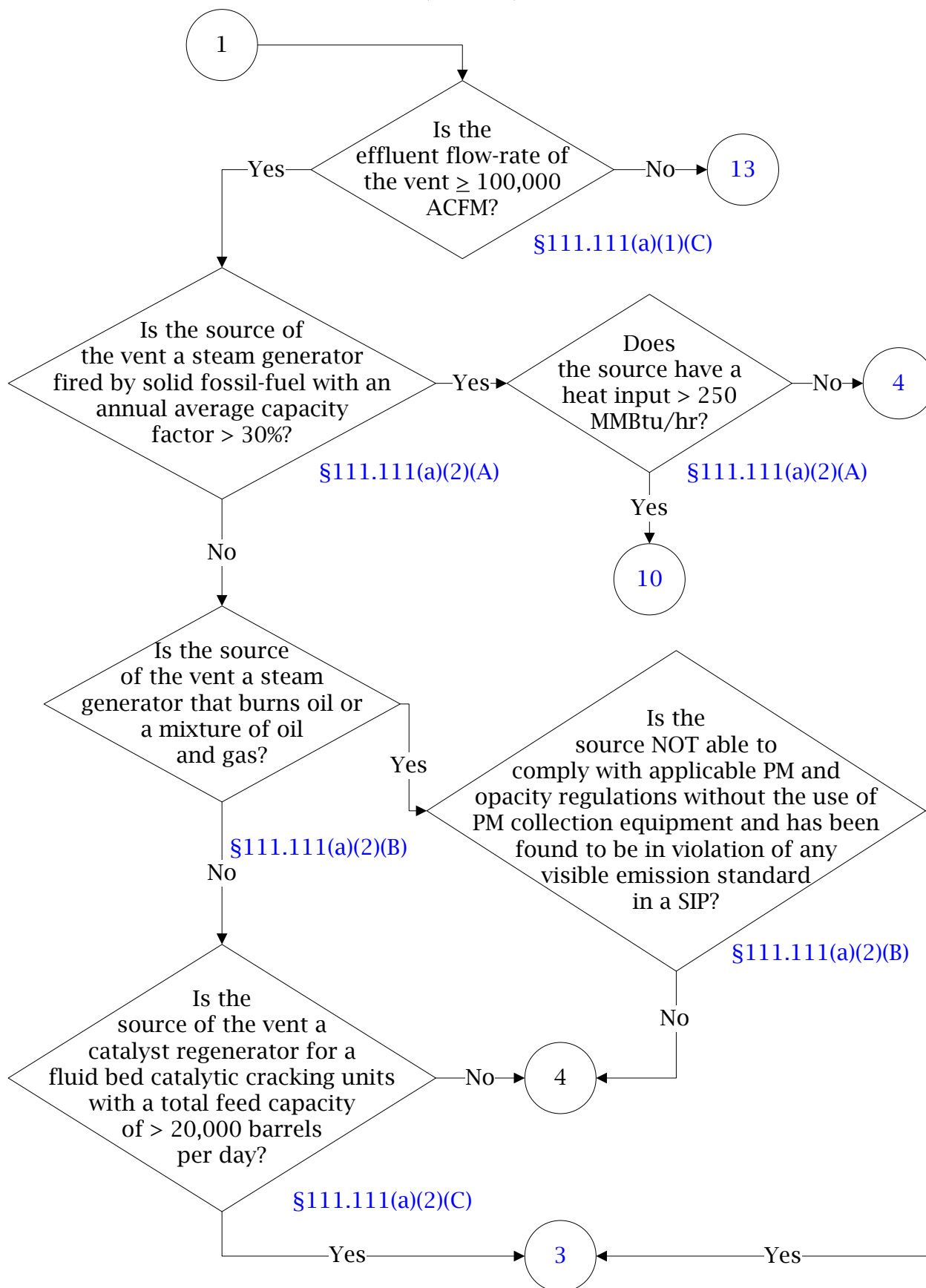


Below is a flowchart describing 30 TAC Chapter 111, Visible Emissions.  
 For the text of the statute/rule, please go to  
[30 TAC Chapter 111, Visible Emissions](#)  
 (1 of 13)



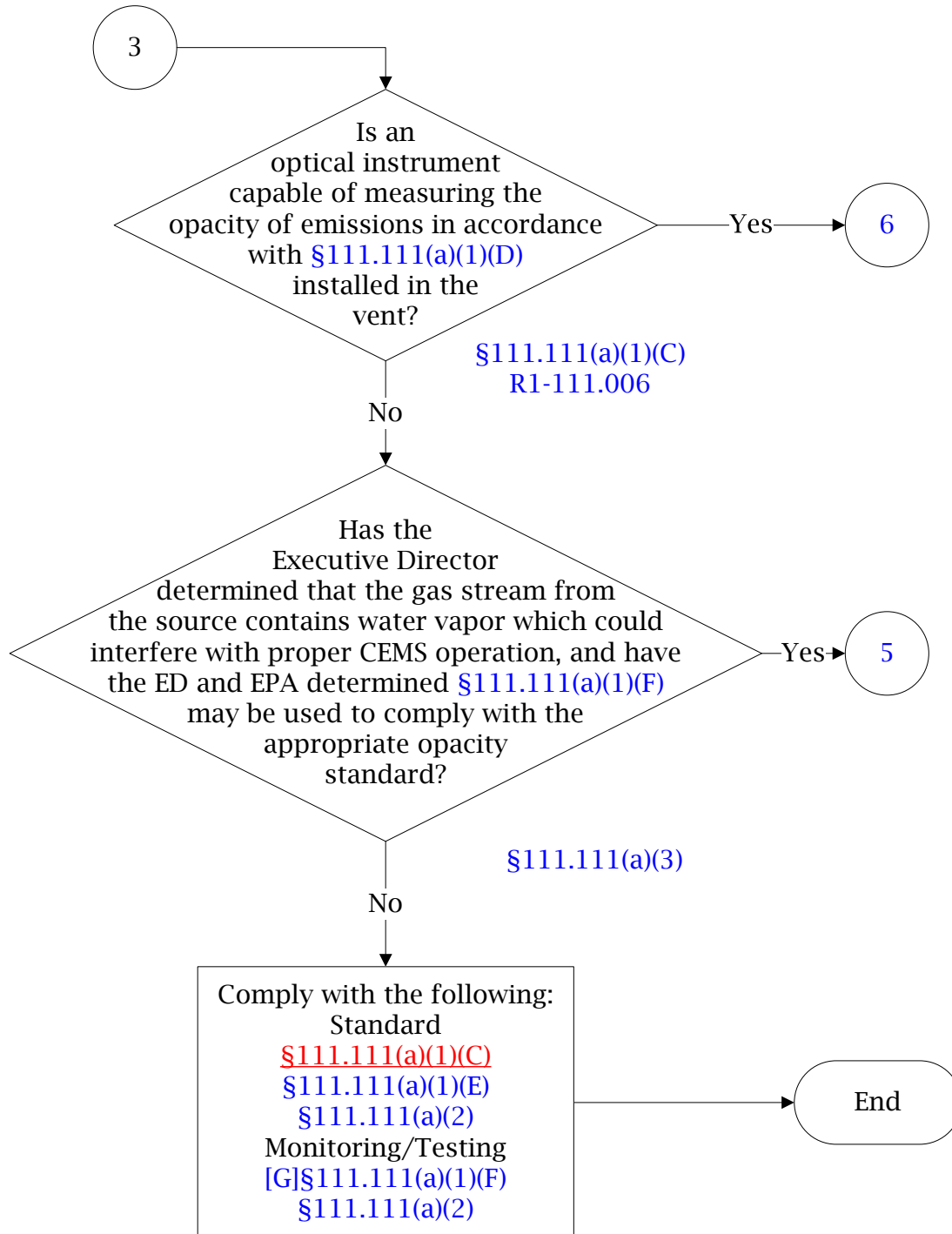
# 30 TAC Chapter 111, Visible Emissions (Stationary Vents/Flares)

(2 of 13)



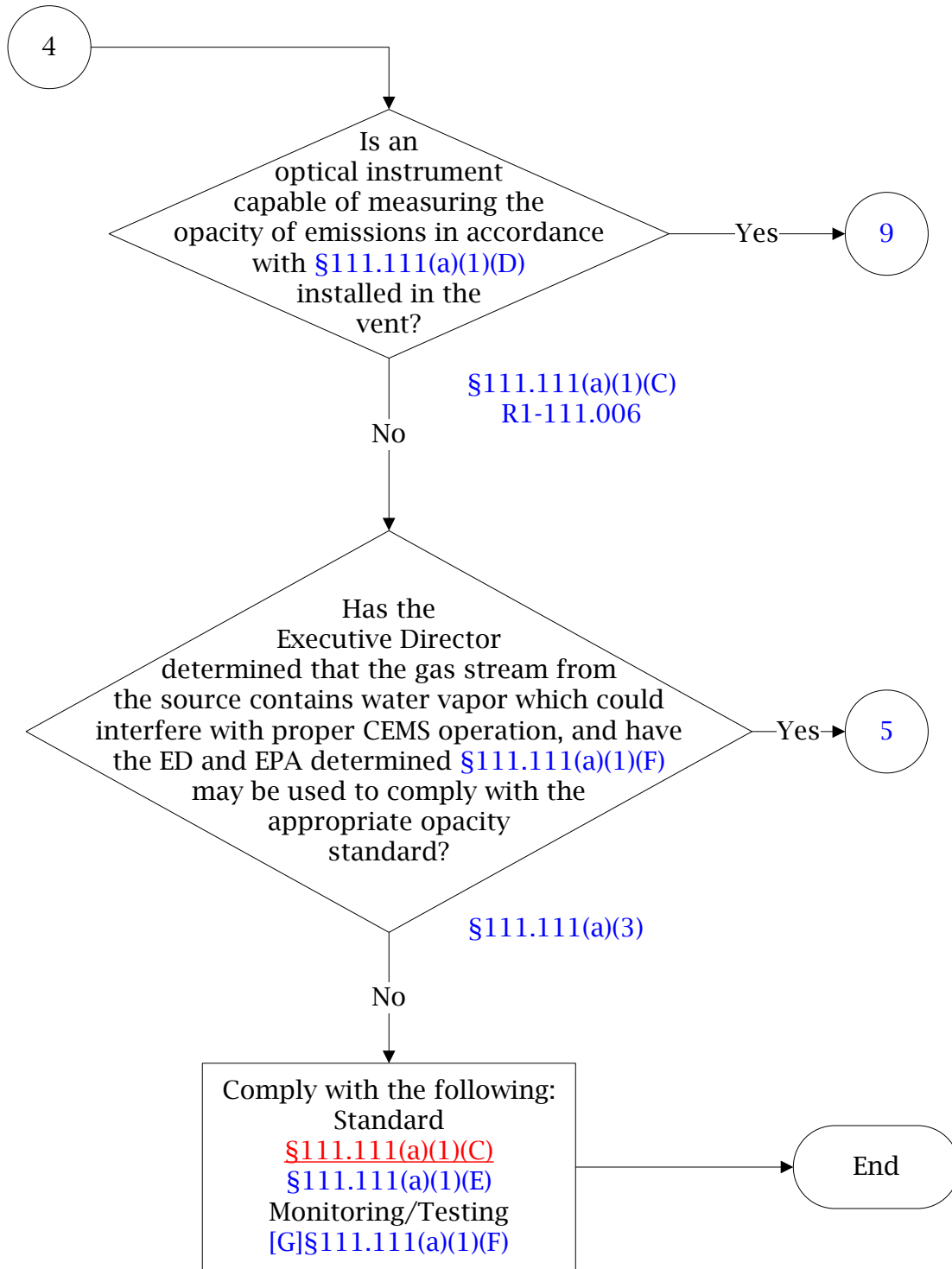
# 30 TAC Chapter 111, Visible Emissions (Stationary Vents/Flares)

(3 of 13)



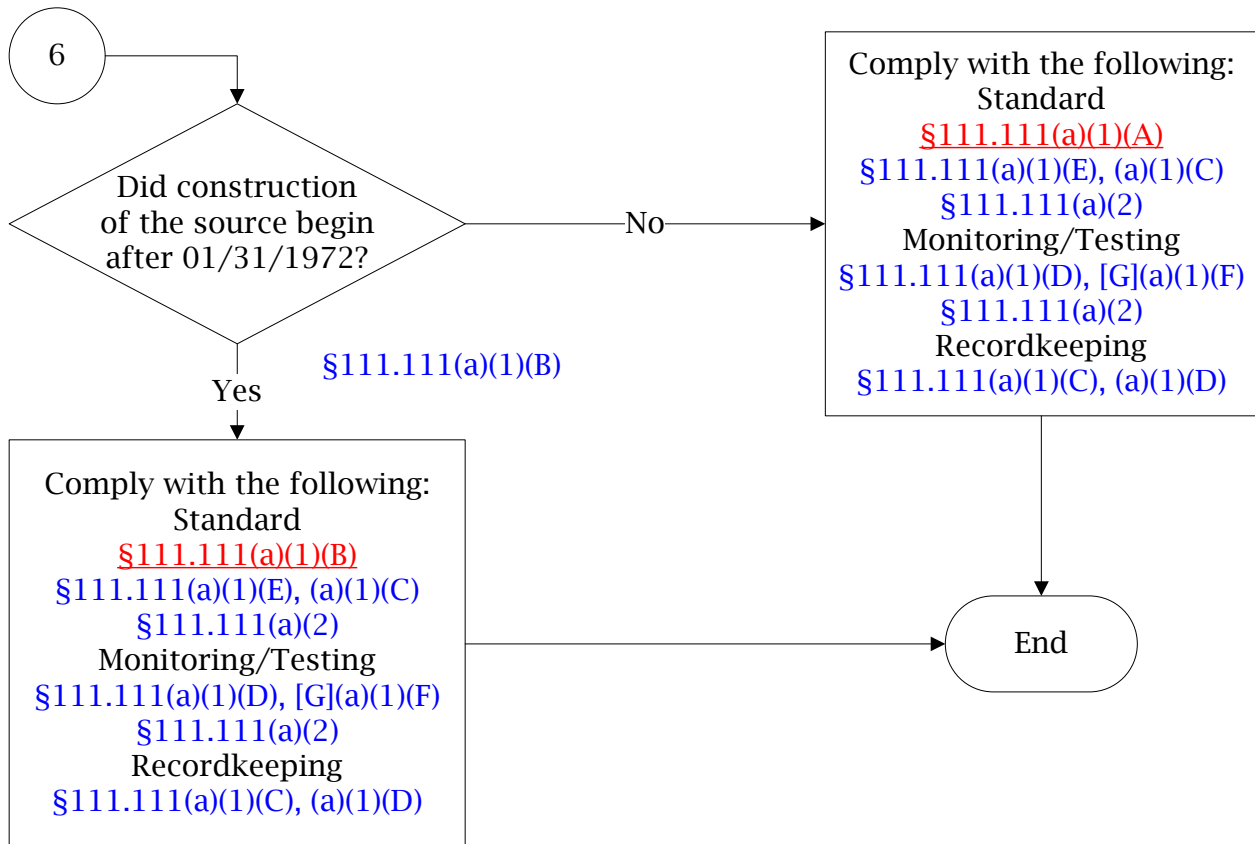
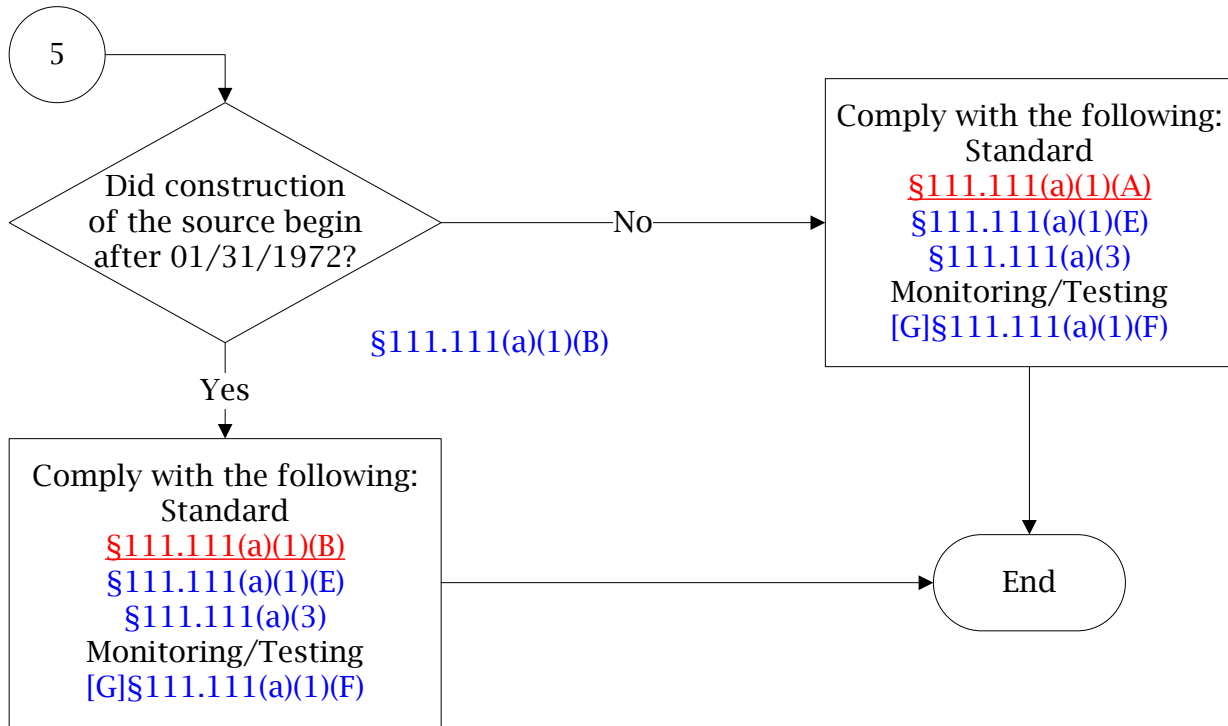
# 30 TAC Chapter 111, Visible Emissions (Stationary Vents/Flares)

(4 of 13)



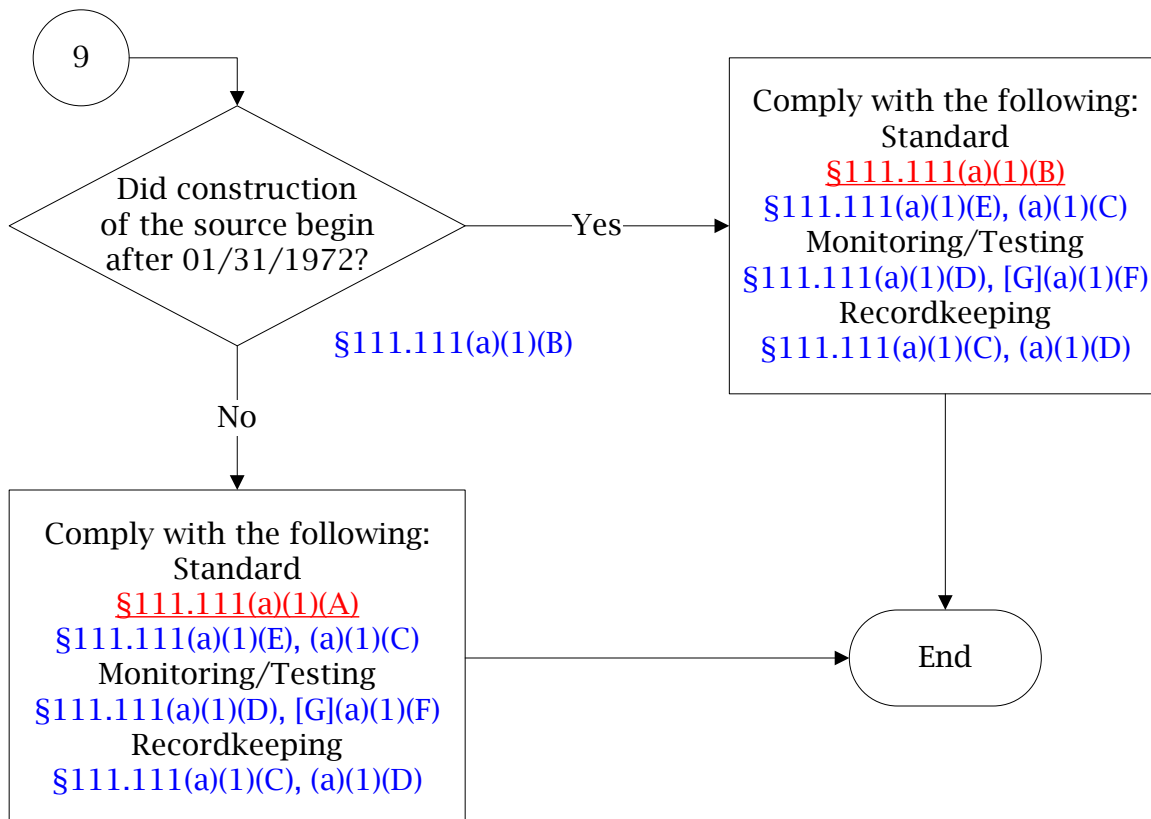
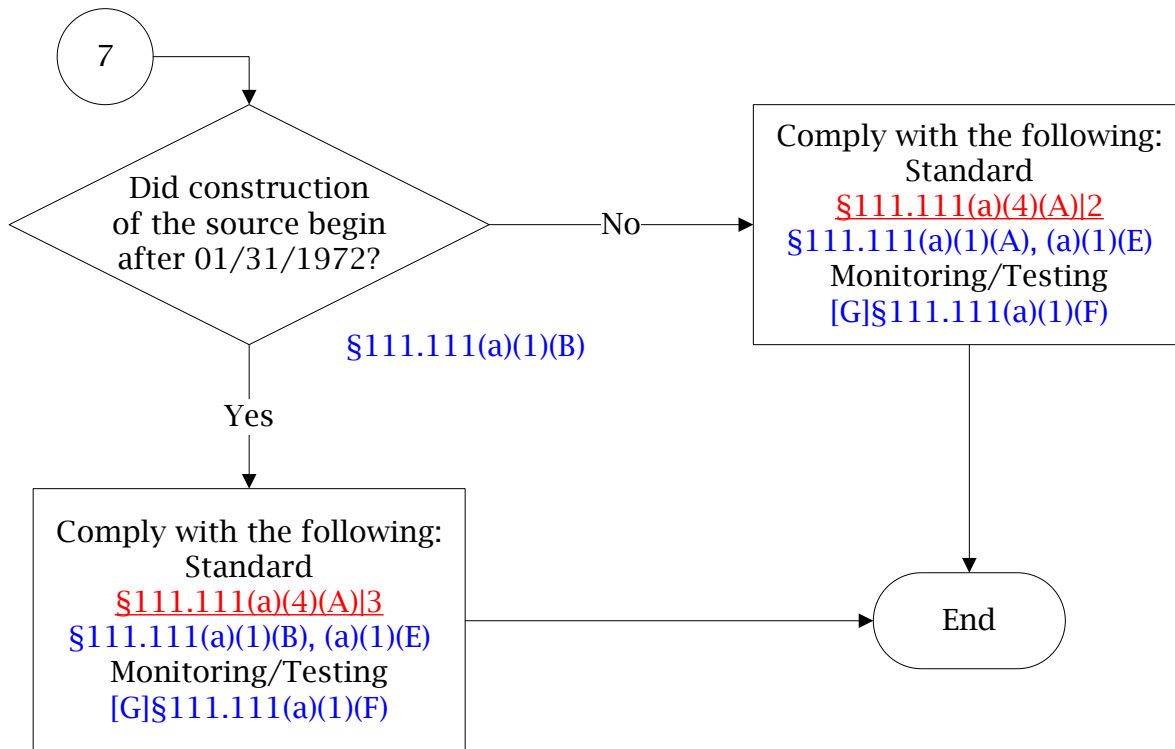
# 30 TAC Chapter 111, Visible Emissions (Stationary Vents/Flares)

(5 of 13)



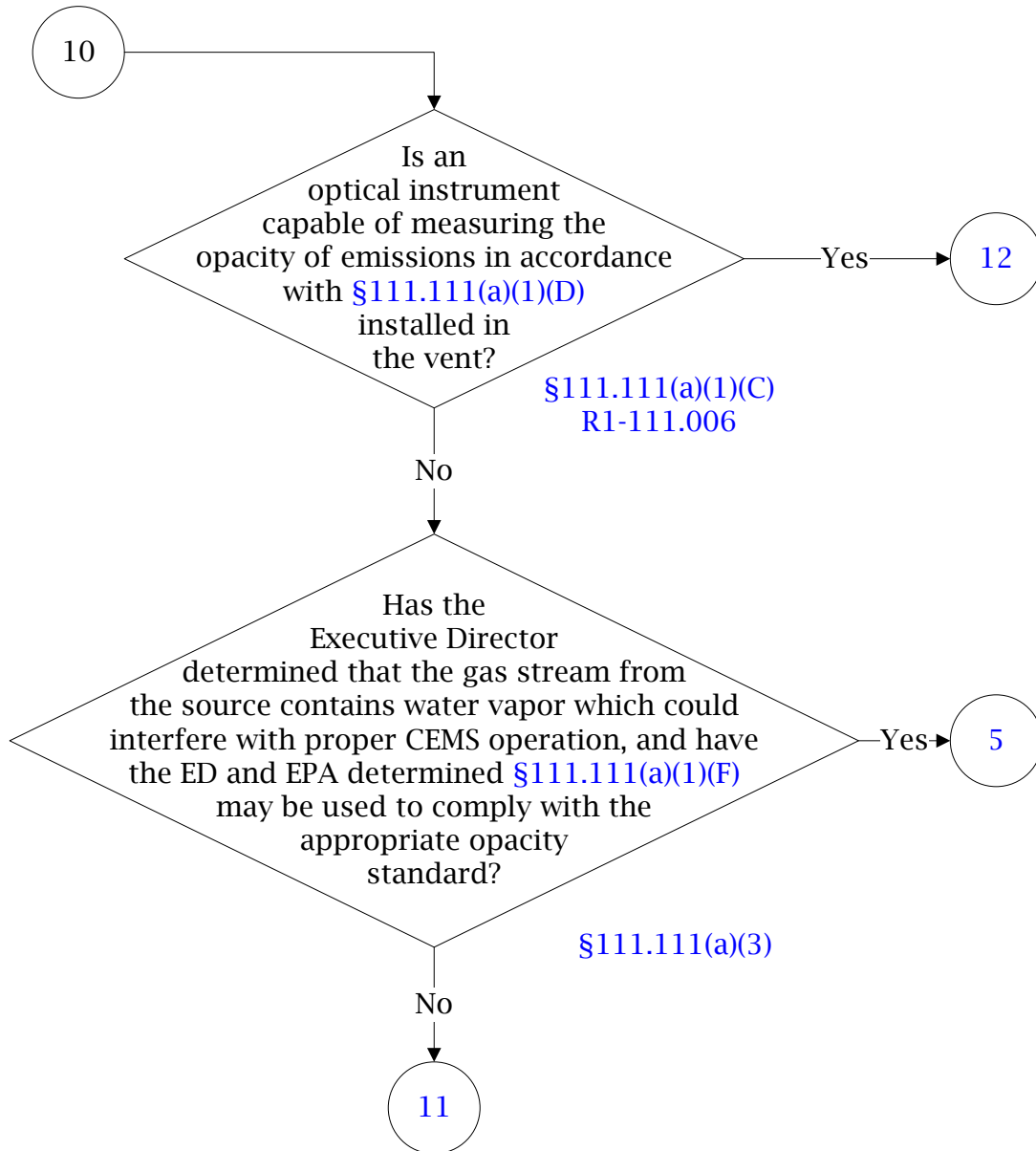
# 30 TAC Chapter 111, Visible Emissions (Stationary Vents/Flares)

(6 of 13)



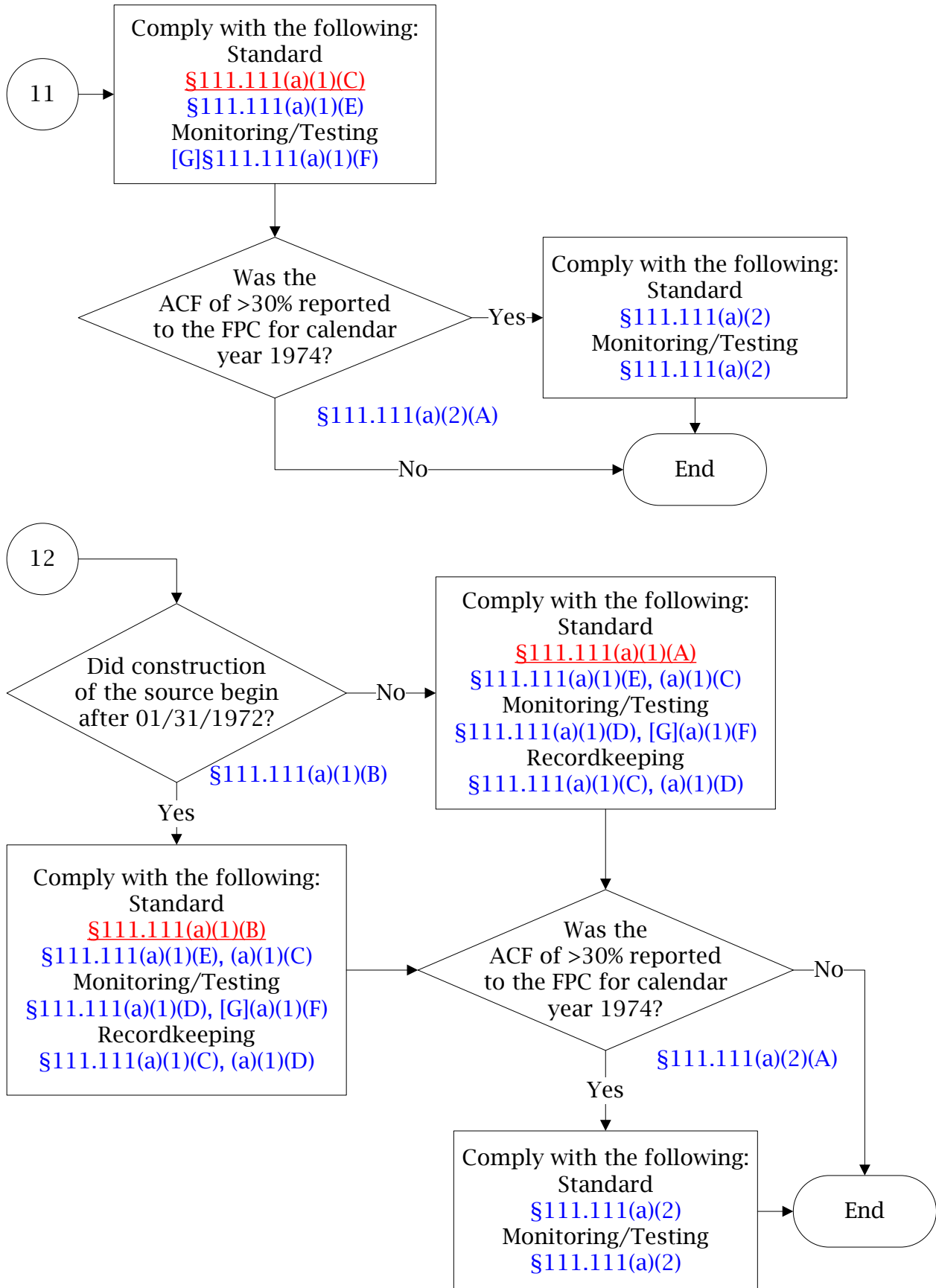
# 30 TAC Chapter 111, Visible Emissions (Stationary Vents/Flares)

(7 of 13)



# 30 TAC Chapter 111, Visible Emissions (Stationary Vents/Flares)

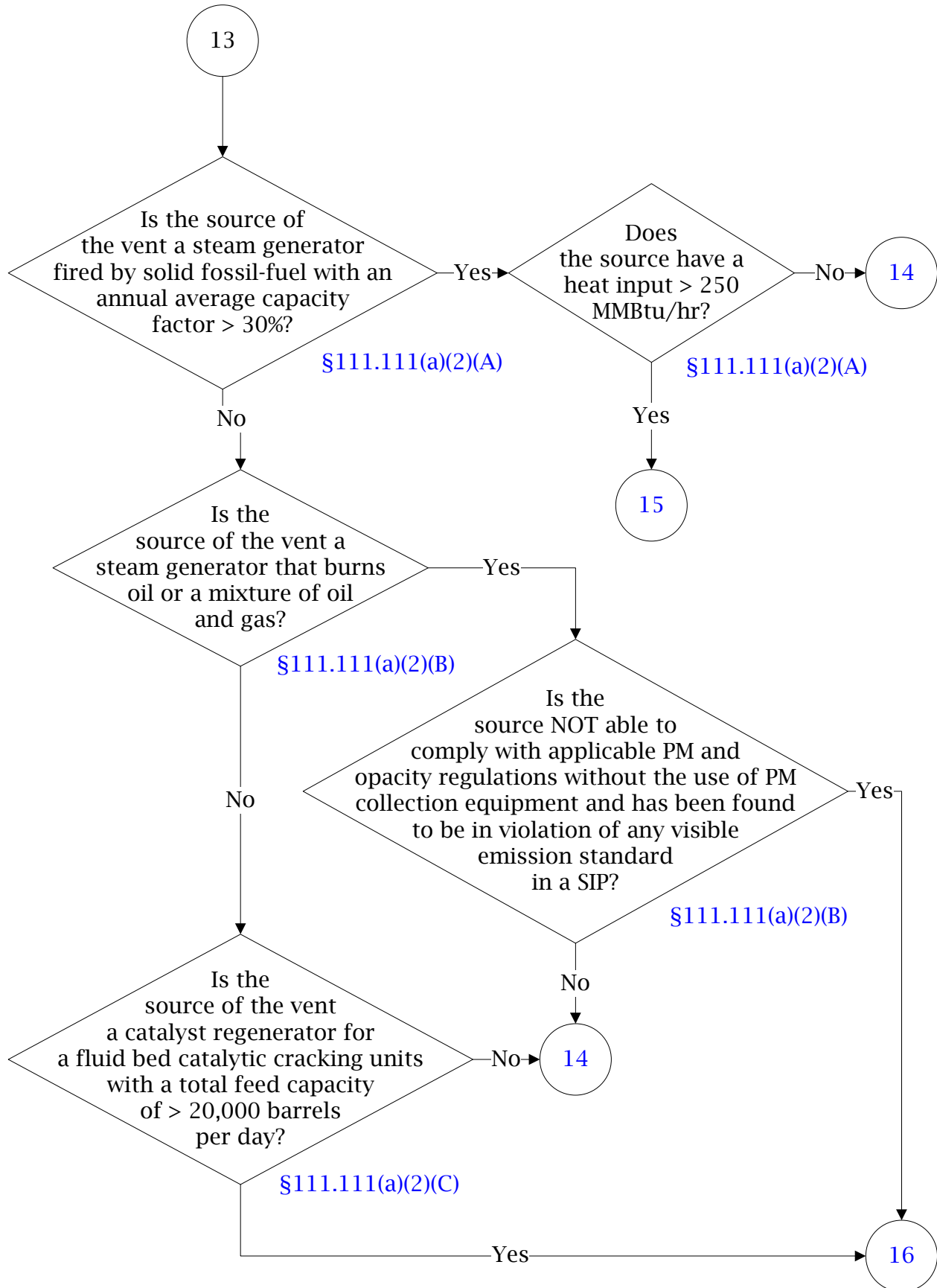
(8 of 13)





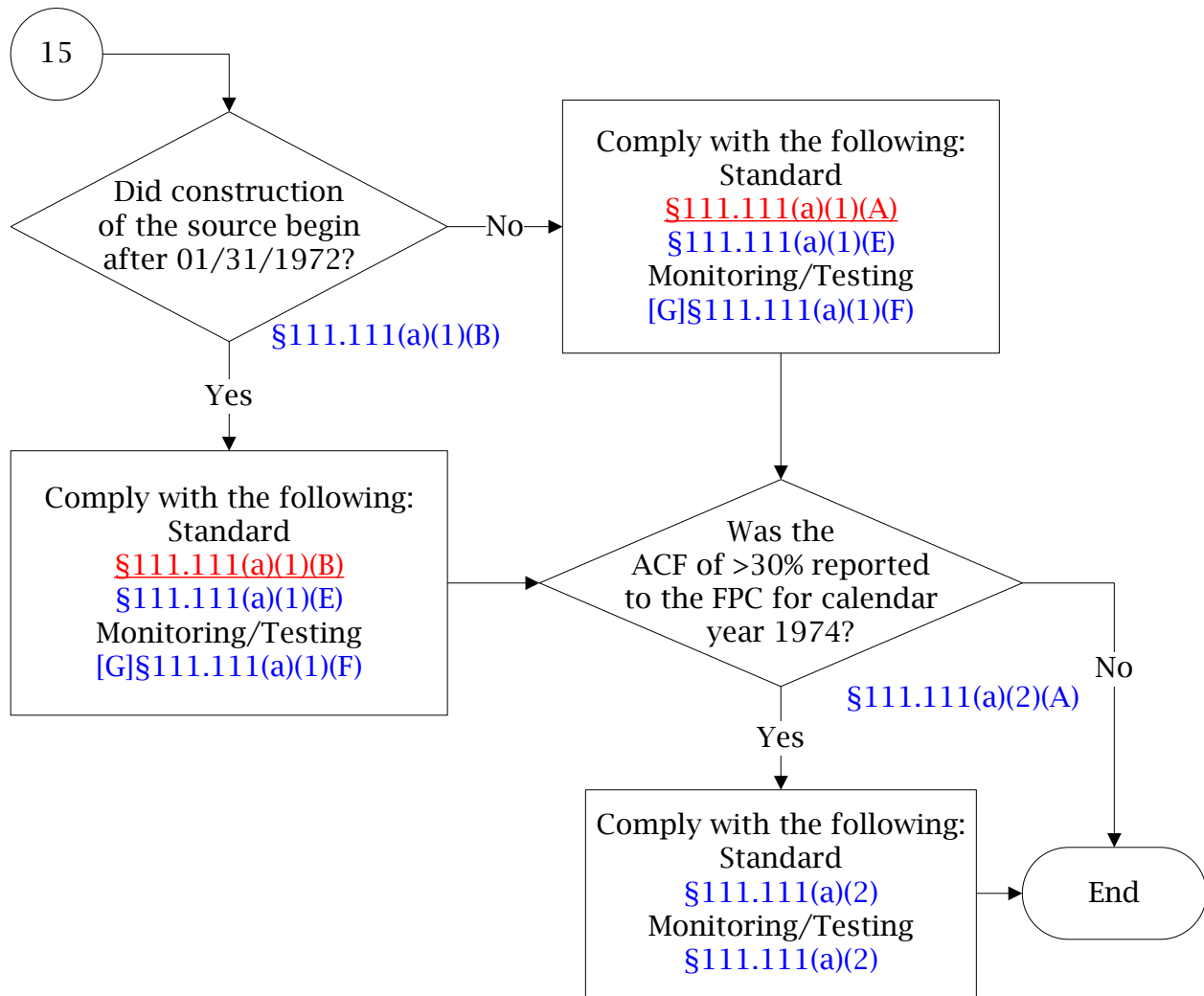
# 30 TAC Chapter 111, Visible Emissions (Stationary Vents/Flares)

(9 of 13)



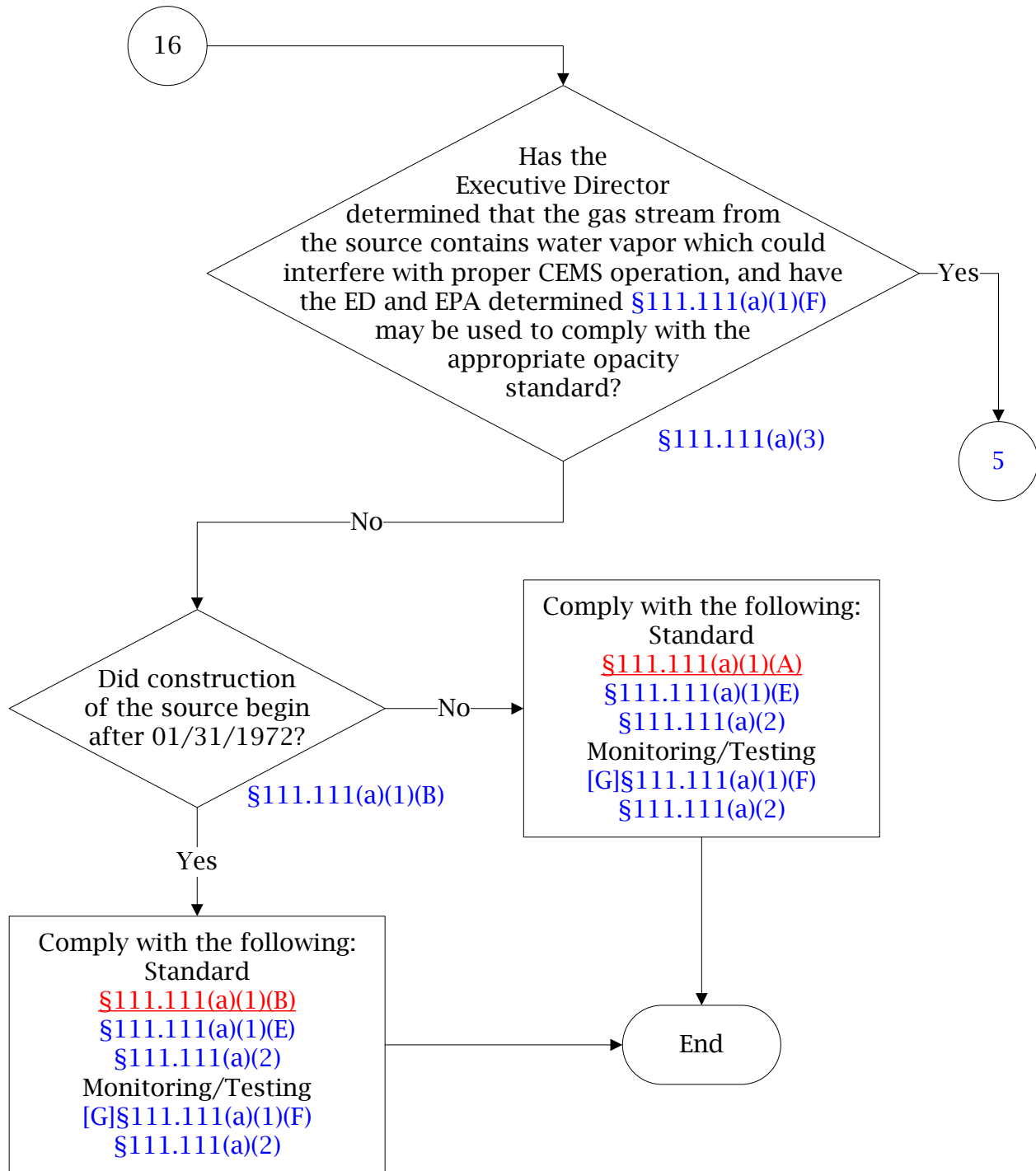
# 30 TAC Chapter 111, Visible Emissions (Stationary Vents/Flares)

(10 of 13)



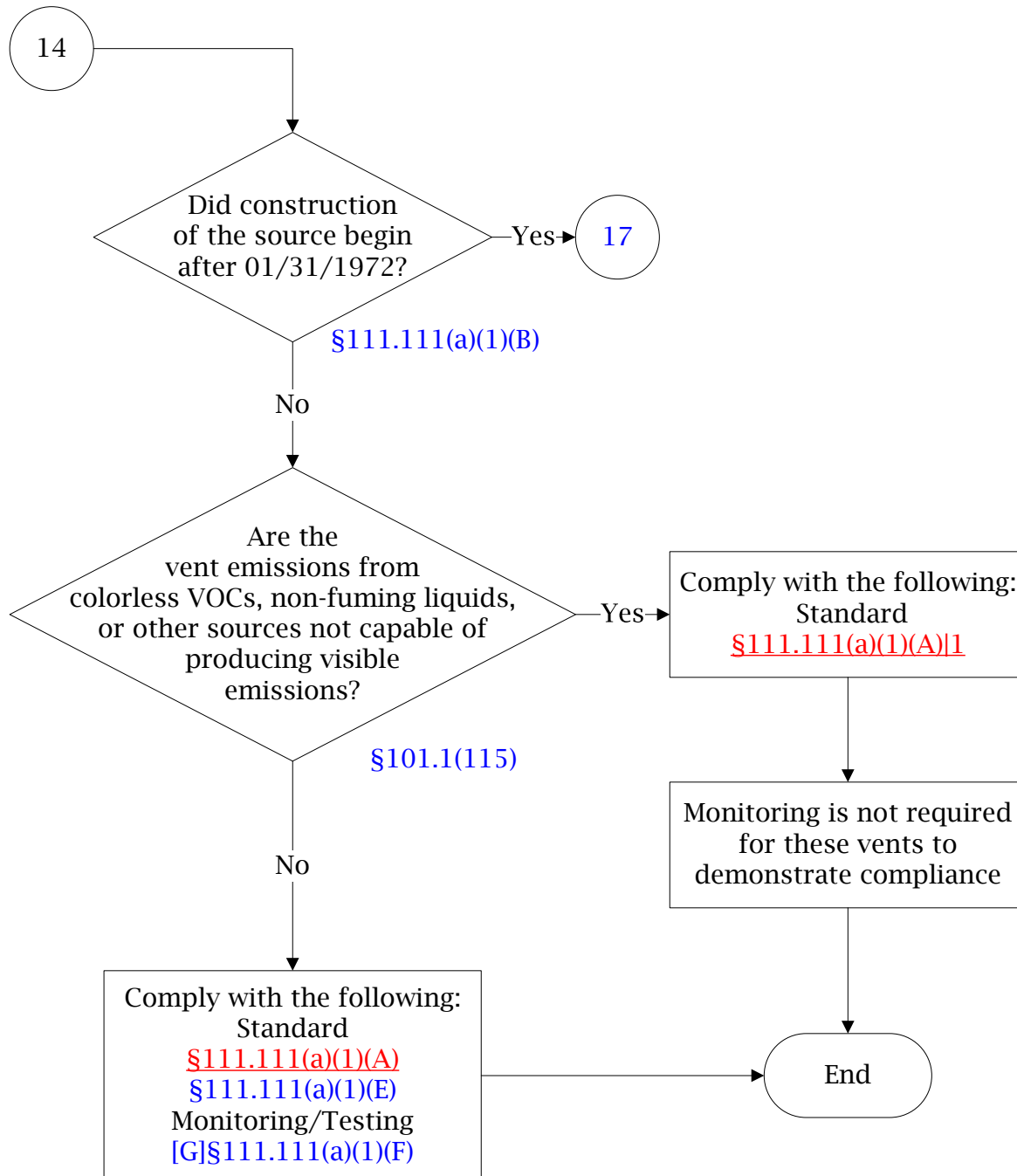
# 30 TAC Chapter 111, Visible Emissions (Stationary Vents/Flares)

(11 of 13)



# 30 TAC Chapter 111, Visible Emissions (Stationary Vents/Flares)

(12 of 13)



# 30 TAC Chapter 111, Visible Emissions (Stationary Vents/Flares)

(13 of 13)

