



Technical Information Meeting

San Antonio

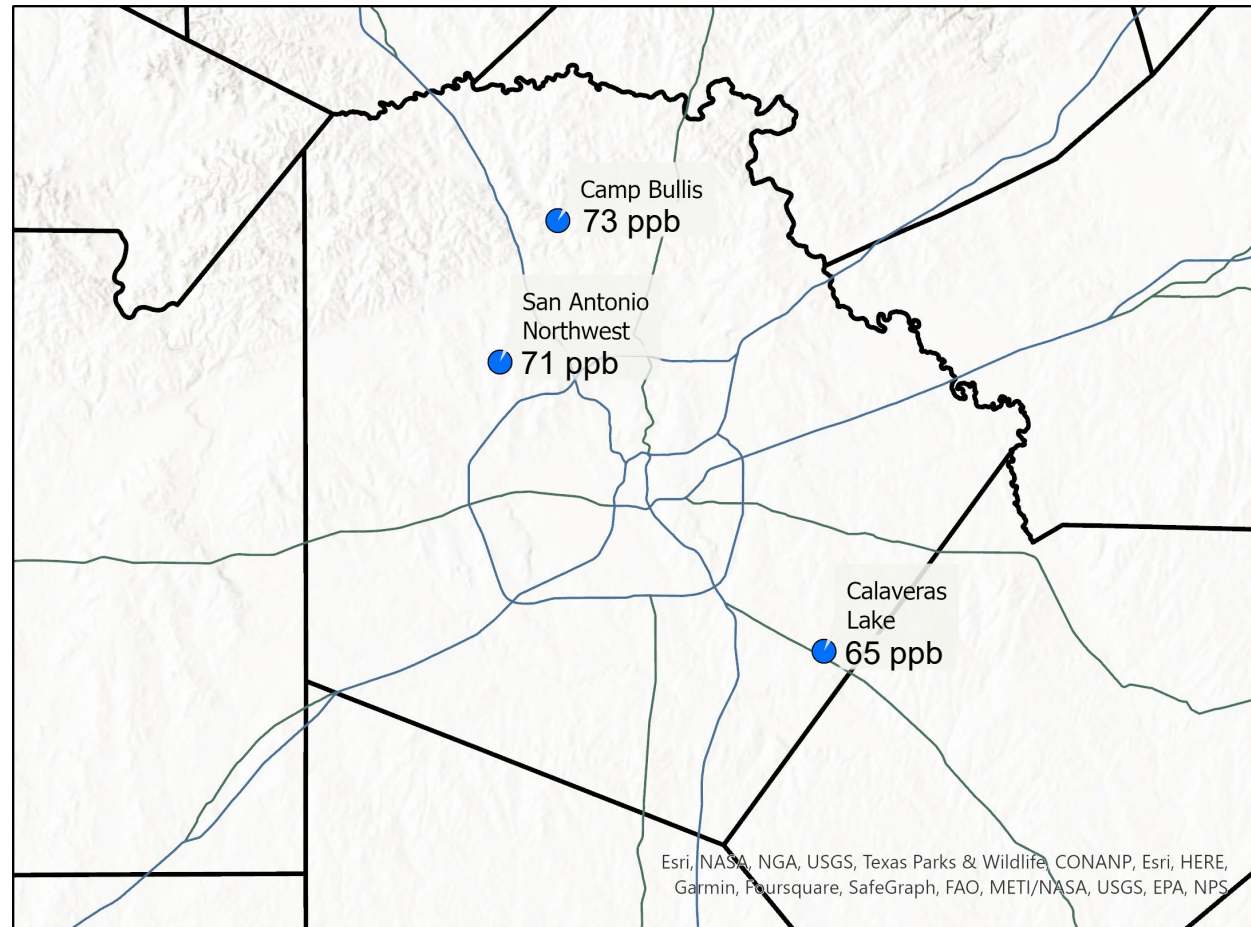
Eight-Hour Ozone Design Values

Madison Knapp

Outline

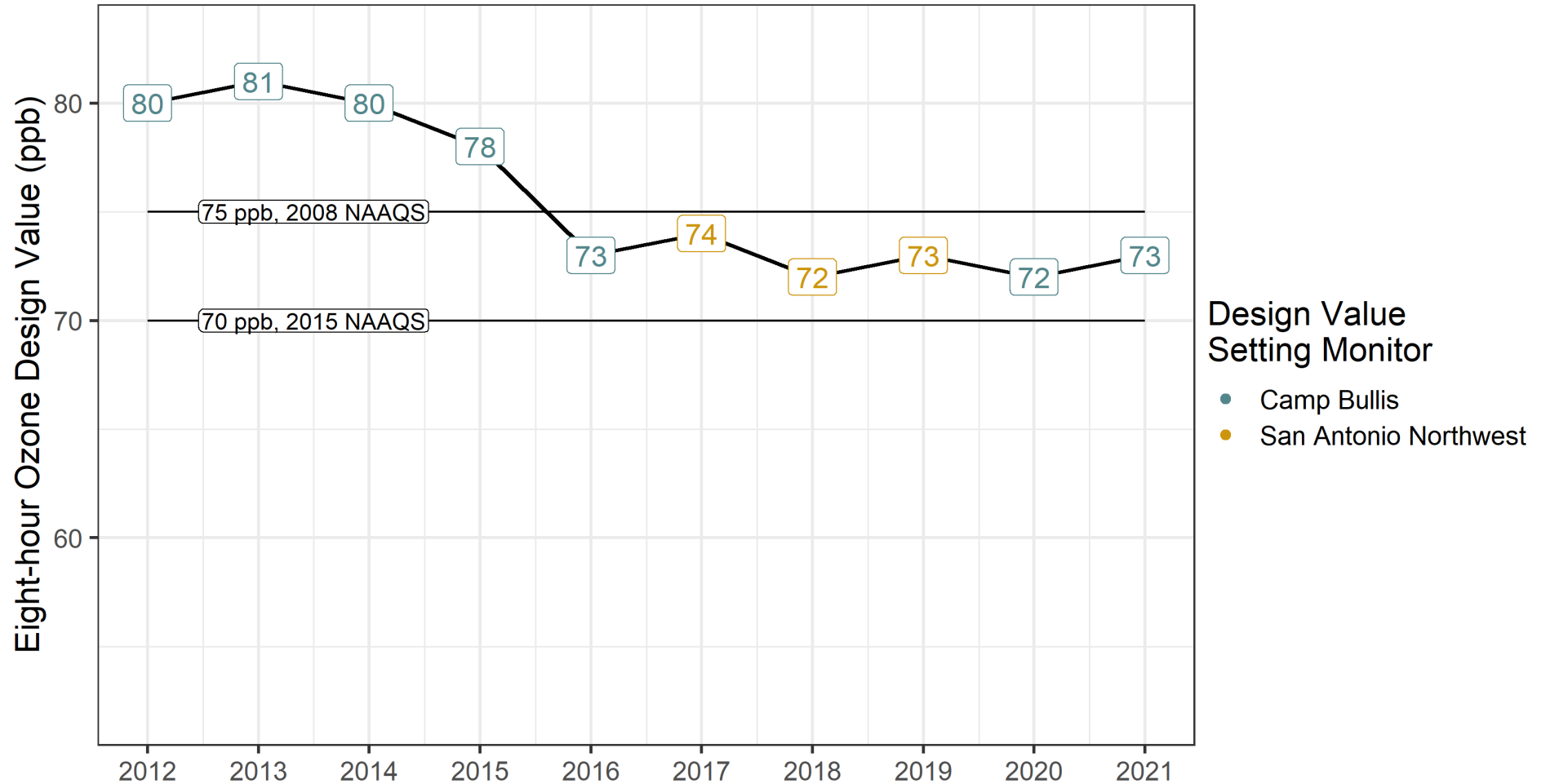
- Eight-Hour Ozone trends over the most recent decade with complete years of verified data (2012 - 2021).
- Design value trends within the Bexar County non-attainment area as a whole and at individual monitors:
 - By month and year;
 - Exceedance Days;
 - 4th Highest Eight-Hour Ozone Values; and
 - Background Ozone Estimates.

Bexar County Regulatory Monitors

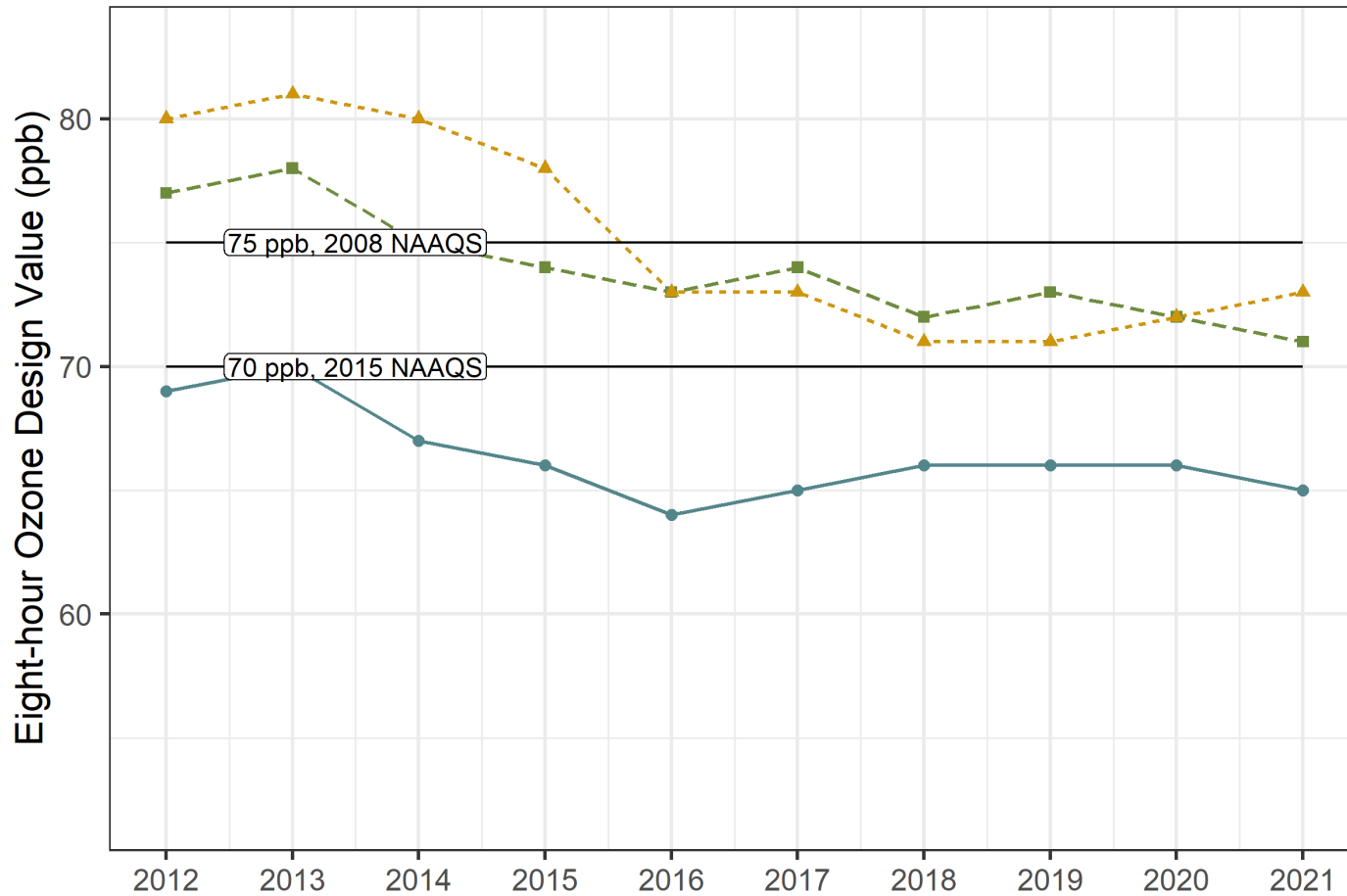


2021 eight-hour
design values shown.

Eight-Hour Design Value Trends



Eight-Hour Design Value Trends

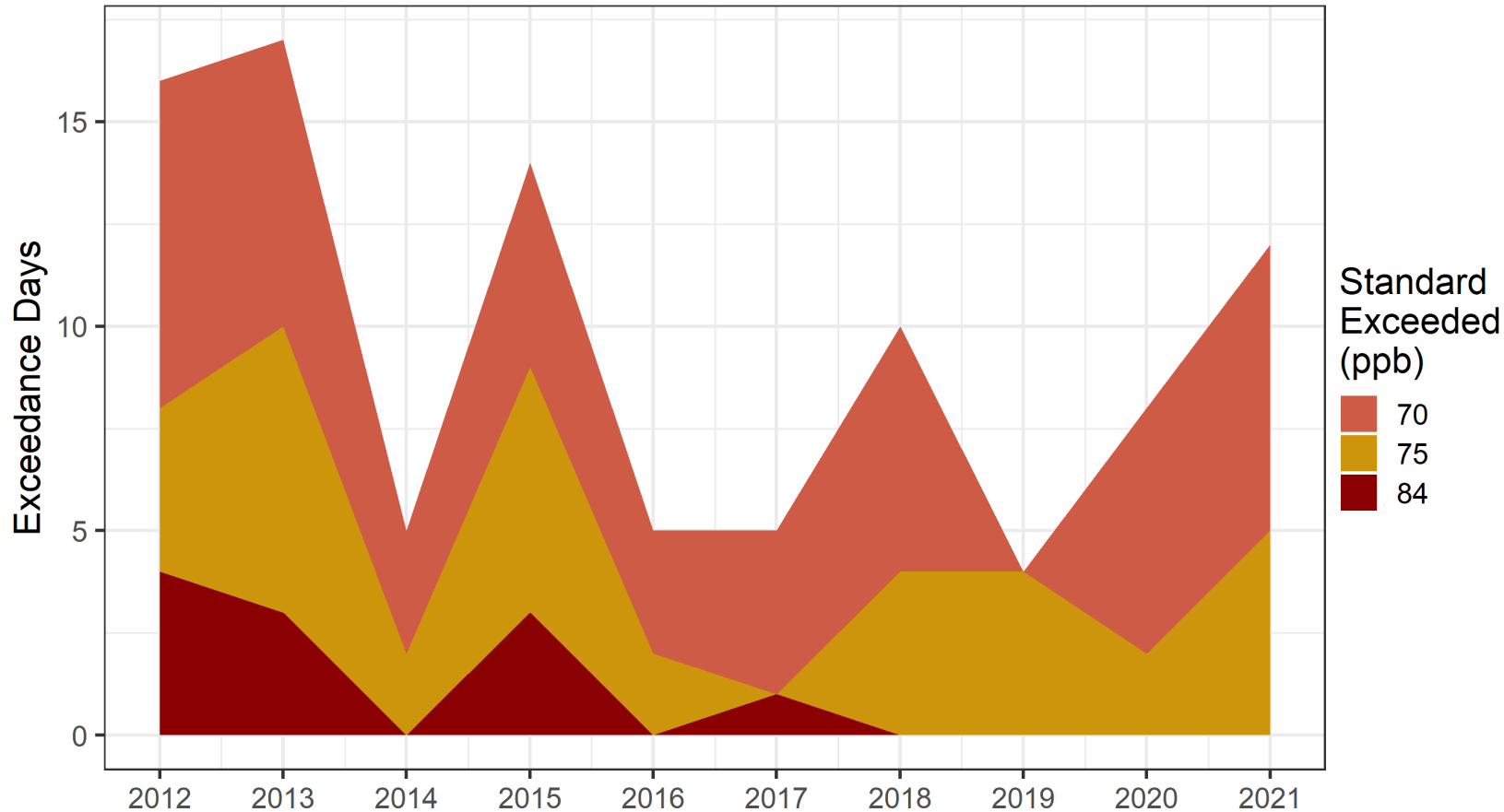


Monitor Name

- Calaveras Lake
- ▲ Camp Bullis
- San Antonio Northwest

Site Name	% Change 2012 to 2016	% Change 2016 to 2021
Camp Bullis	-9%	0%
San Antonio Northwest	-5%	-3%
Calaveras Lake	-7%	+2%

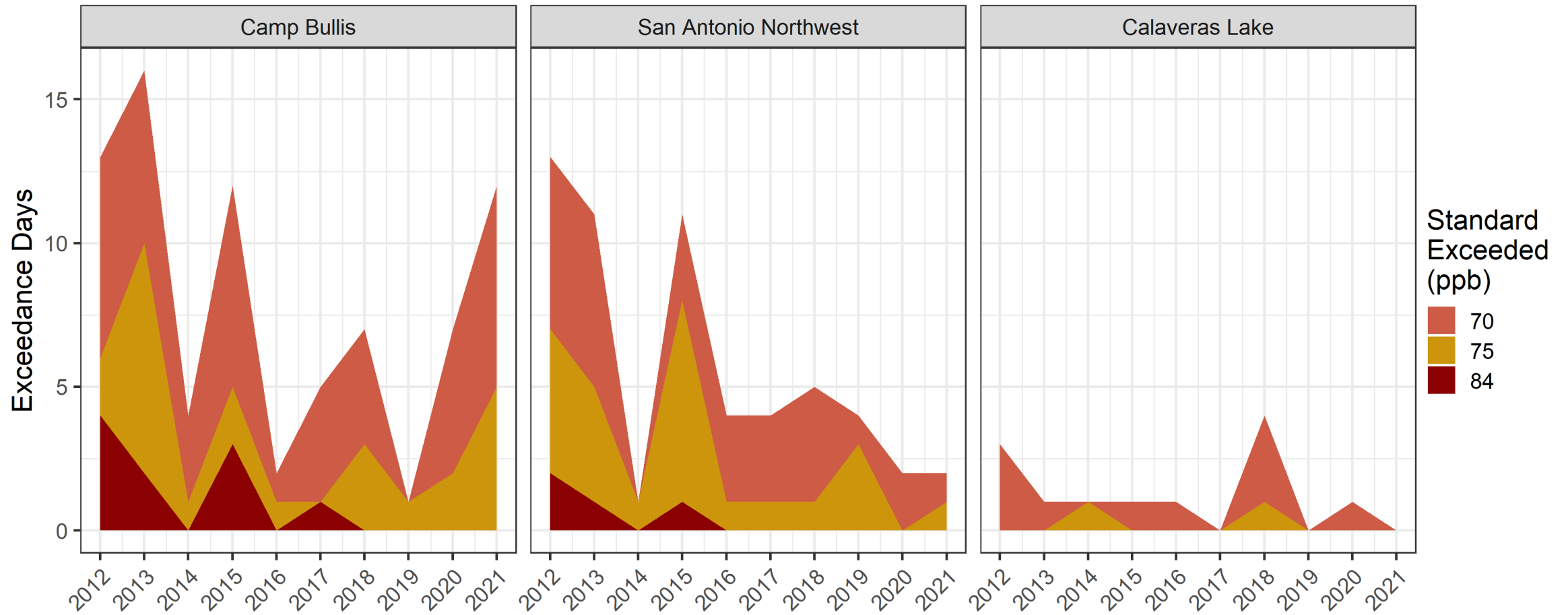
Eight-Hour Ozone Exceedance Day Trends



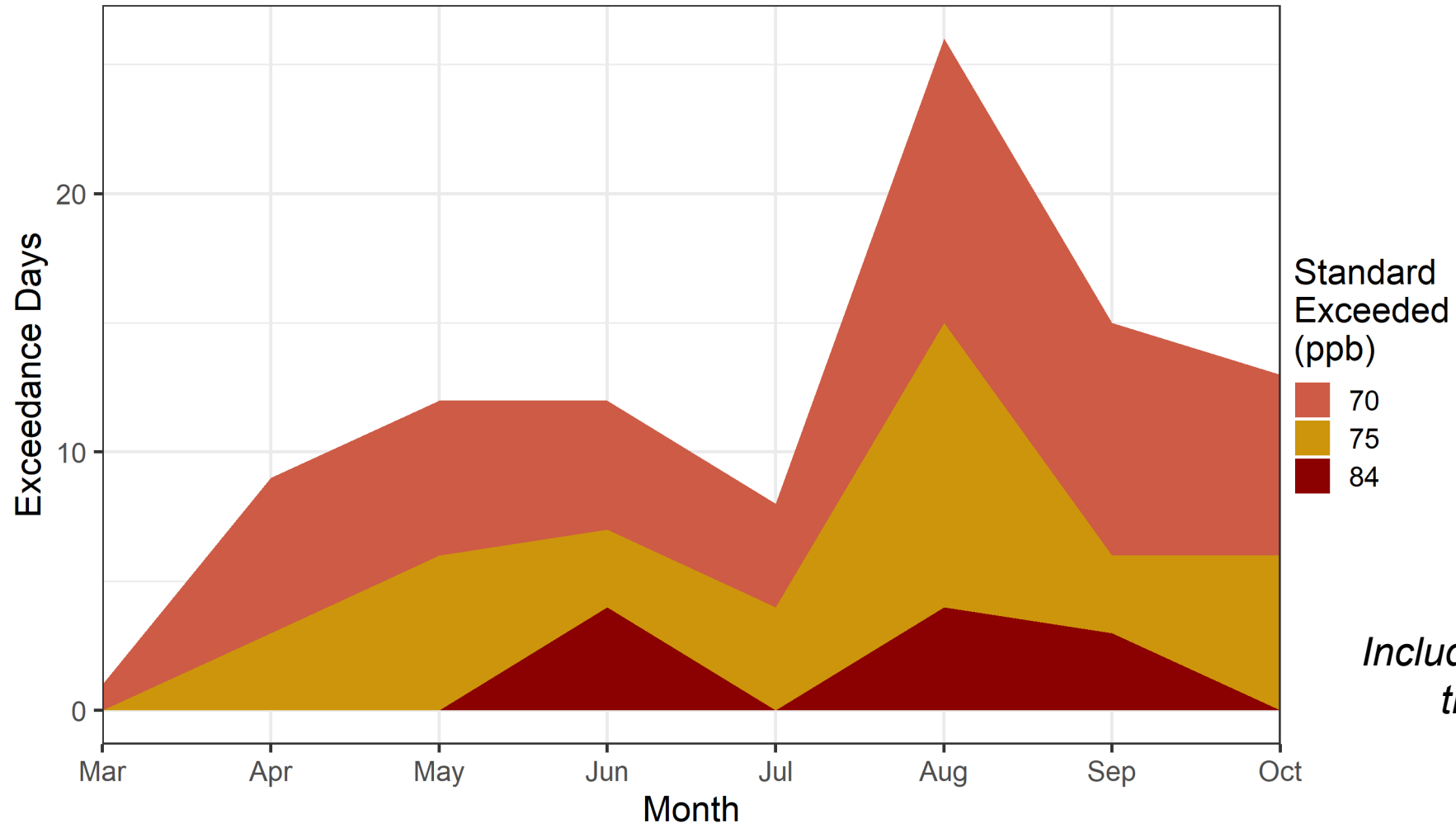
NAAQS Standard	Change 2012-2016
Days > 70	- 11 days
Days > 75	- 6 days
Days > 84	- 4 days

NAAQS Standard	Change 2016-2021
Days > 70	+ 7 days
Days > 75	+ 3 days
Days > 84	-

Eight-Hour Ozone Exceedance Day Trends

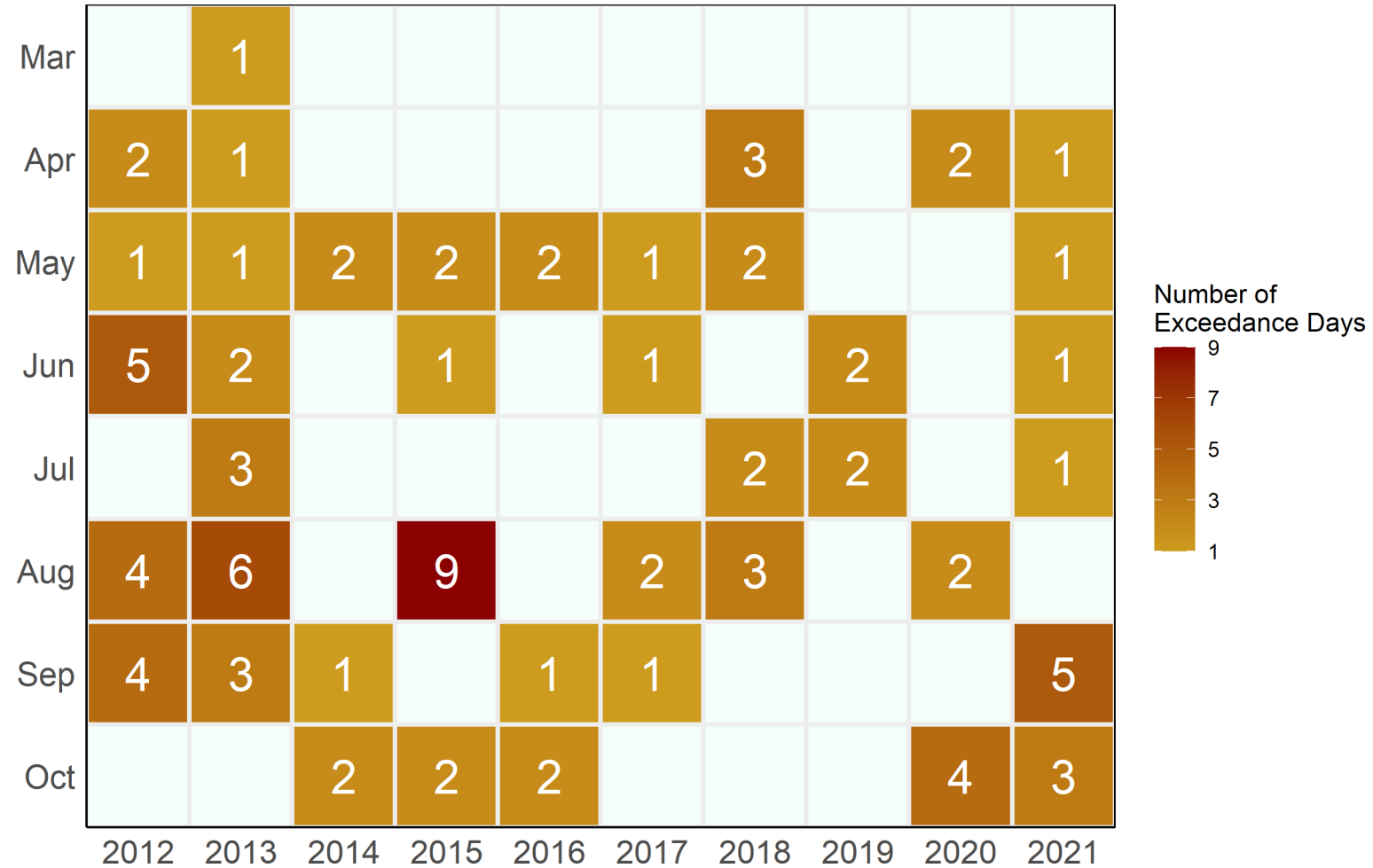


Eight-Hour Ozone Exceedance Days by Month

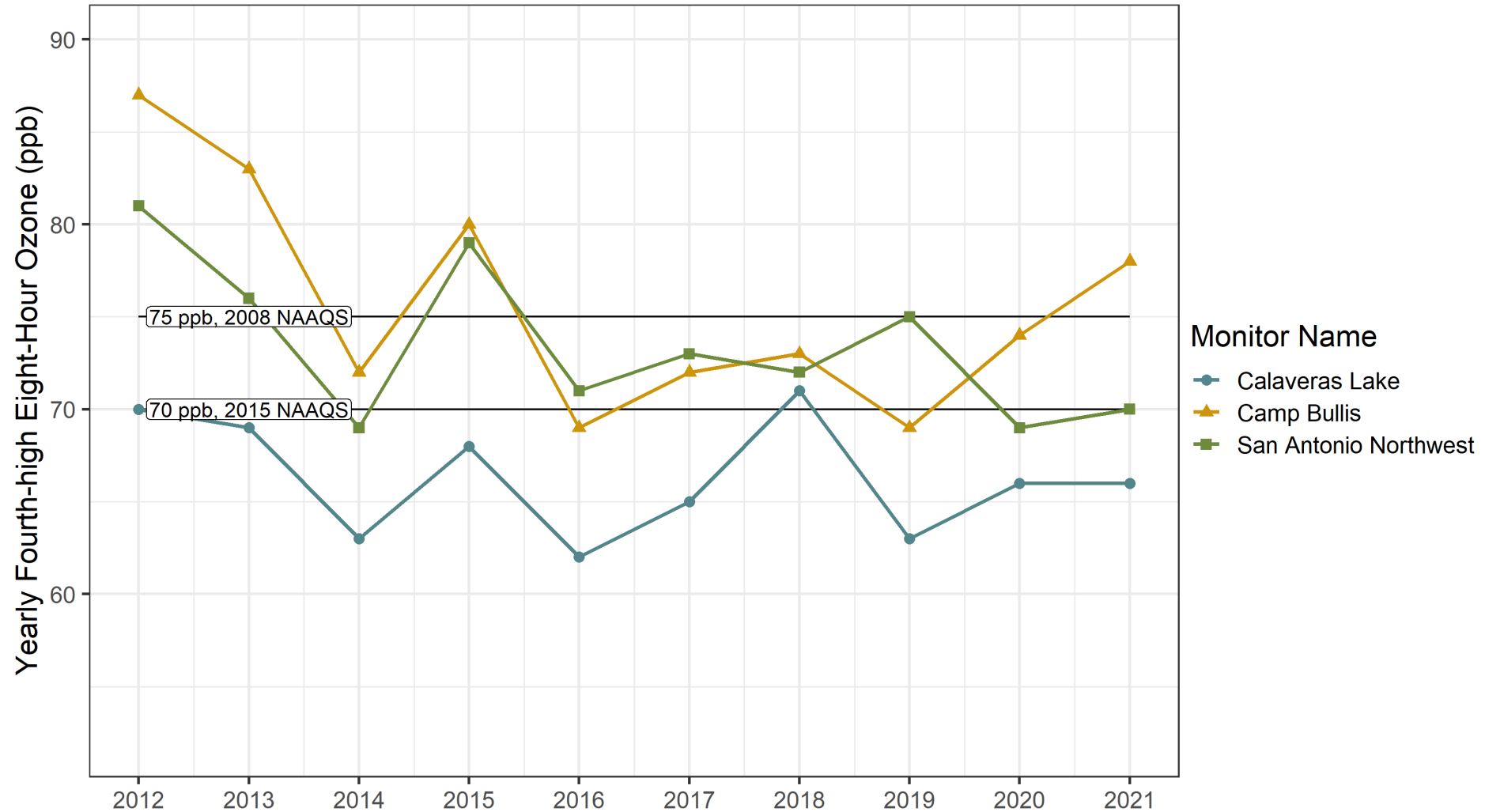


Includes data for 2012 through 2021

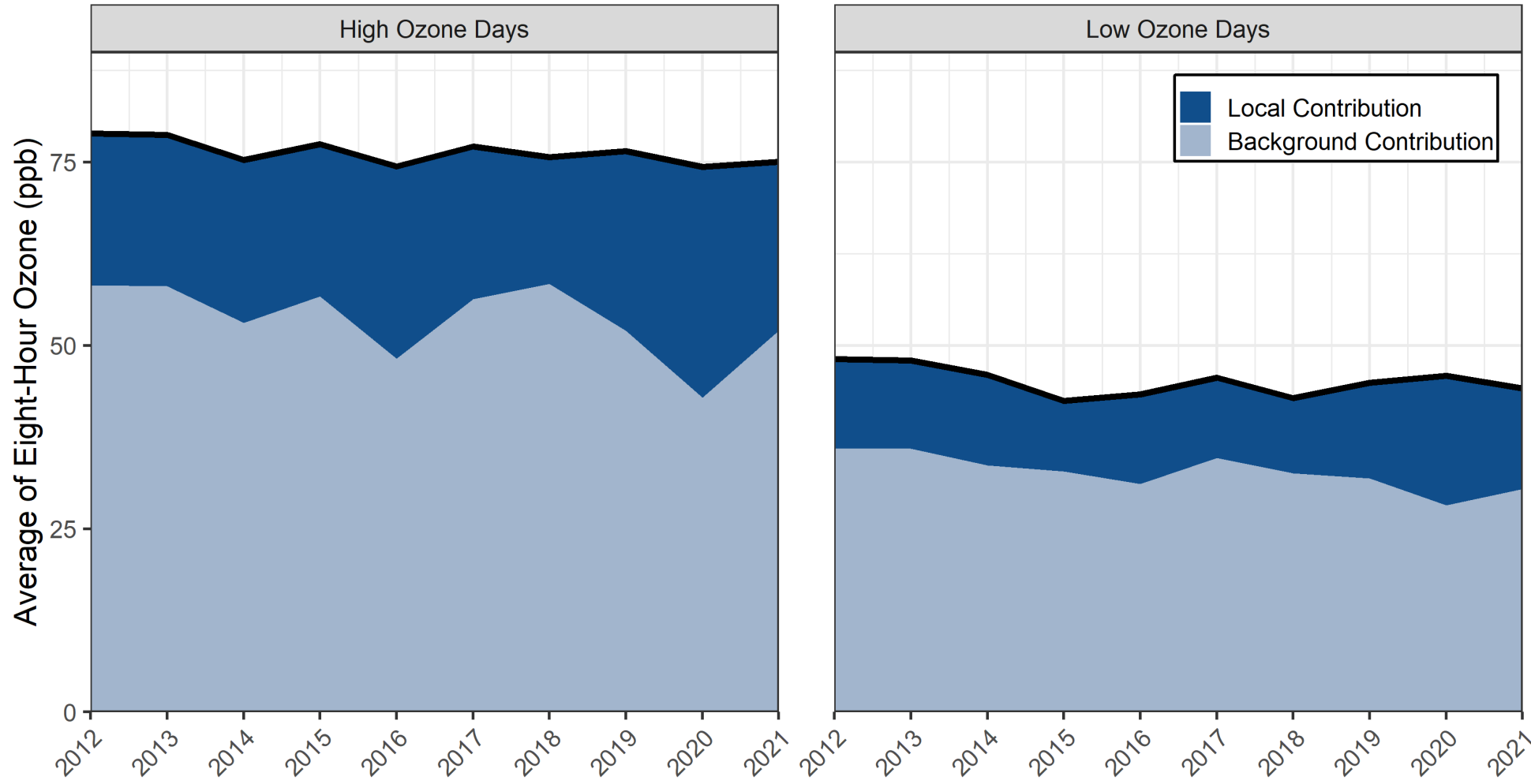
Eight-Hour Ozone Exceedance Day Calendar



Eight-Hour Ozone Fourth Highs

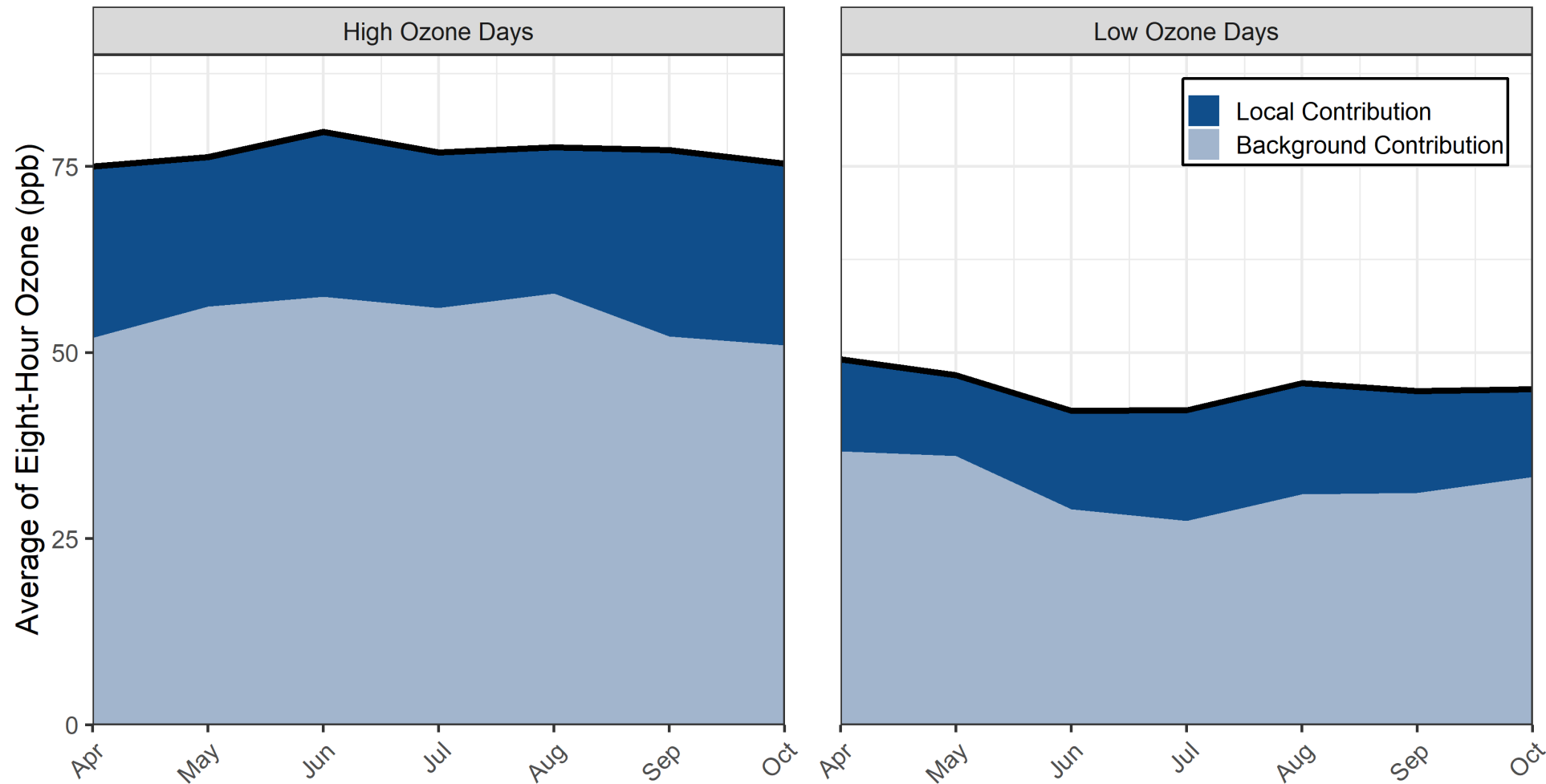


Eight-Hour Background Ozone Trends



Only Includes data for April through October

Eight-Hour Background Ozone by Month



Includes data for 2012 through 2021

Summary

- Design values have decreased since 2012.
- The largest decrease in the design value occurred between 2012 and 2016.
- Since 2018 there have been no severe exceedance days (MDA8 > 84 ppb), but days over 70 ppb still occur.
- There seems to be a slight trend in estimated background ozone over the period studied.

Questions?

Madison Knapp

Office of Air | Air Quality Division | Air Modeling and Data Analysis

Madison.Knapp@tceq.texas.gov

All data used to generate graphics for this presentation has been validated and were retrieved from the EPA Air Quality System in April 2022.

All maps in this presentation were generated by the Air Quality Division of the Texas Commission on Environmental Quality. These products are for informational purposes and may not have been prepared for or be suitable for legal, engineering, or surveying purposes. They do not represent an on-the-ground survey and represent only the approximate relative location of property boundaries. For more information concerning this map, contact the Air Quality Division at 512-239-1459.